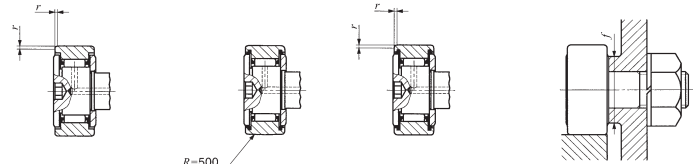
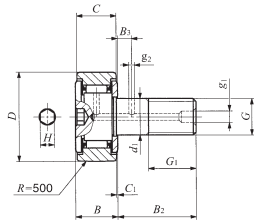


CAM FOLLOWERS

Inch Series Cam Followers **With Cage/With Hexagon Hole**



Stud dia. 4.826 – 22.225 mm

CR...BR

Stud dia. mm (inch)	Identification number				Mass (Ref.) g	Boundary dimensions mm (inch)				
	Shield type		Sealed type			D	C	d ₁	G UNF	G ₁
	With crowned outer ring	With cylindrical outer ring	With crowned outer ring	With cylindrical outer ring						
4.826 (¹ / ₄)	CR 8 BR	CR 8 B	CR 8 BUUR	CR 8 BUU	9	12.700 (¹ / ₂)	8.731 (⁵ / ₁₆)	4.826	No.10-32	6.350 (¹ / ₄)
	CR 8-1 BR	CR 8-1 B	CR 8-1 BUUR	CR 8-1 BUU	10	12.700 (¹ / ₂)	9.525 (³ / ₈)	4.826	No.10-32	6.350 (¹ / ₄)
6.350 (¹ / ₄)	CR 10 BR	CR 10 B	CR 10 BUUR	CR 10 BUU	19	15.875 (⁵ / ₈)	10.319 (⁹ / ₁₆)	6.350 (¹ / ₄)	¹ / ₄ -28	7.938 (⁵ / ₁₆)
	CR 10-1 BR	CR 10-1 B	CR 10-1 BUUR	CR 10-1 BUU	21	15.875 (⁵ / ₈)	11.112 (⁷ / ₁₆)	6.350 (¹ / ₄)	¹ / ₄ -28	7.938 (⁵ / ₁₆)
9.525 (³ / ₈)	CR 12 BR	CR 12 B	CR 12 BUUR	CR 12 BUU	35	19.050 (³ / ₄)	12.700 (¹ / ₂)	9.525 (³ / ₈)	³ / ₈ -24	9.525 (³ / ₈)
	CR 14 BR	CR 14 B	CR 14 BUUR	CR 14 BUU	46	22.225 (⁷ / ₈)	12.700 (¹ / ₂)	9.525 (³ / ₈)	³ / ₈ -24	9.525 (³ / ₈)
11.112 (⁷ / ₁₆)	CR 16 BR	CR 16 B	CR 16 BUUR	CR 16 BUU	73	25.400 (1)	15.875 (⁵ / ₈)	11.112 (⁷ / ₁₆)	⁷ / ₁₆ -20	12.700 (¹ / ₂)
	CR 18 BR	CR 18 B	CR 18 BUUR	CR 18 BUU	88	28.575 (1 ¹ / ₈)	15.875 (⁵ / ₈)	11.112 (⁷ / ₁₆)	⁷ / ₁₆ -20	12.700 (¹ / ₂)
12.700 (¹ / ₂)	CR 20 BR	CR 20 B	CR 20 BUUR	CR 20 BUU	132	31.750 (1 ¹ / ₂)	19.050 (³ / ₄)	12.700 (¹ / ₂)	¹ / ₂ -20	15.875 (⁵ / ₈)
	CR 22 BR	CR 22 B	CR 22 BUUR	CR 22 BUU	157	34.925 (1 ³ / ₈)	19.050 (³ / ₄)	12.700 (¹ / ₂)	¹ / ₂ -20	15.875 (⁵ / ₈)
15.875 (⁵ / ₈)	CR 24 BR	CR 24 B	CR 24 BUUR	CR 24 BUU	225	38.100 (1 ¹ / ₂)	22.225 (⁷ / ₈)	15.875 (⁵ / ₈)	⁵ / ₈ -18	19.050 (³ / ₄)
	CR 26 BR	CR 26 B	CR 26 BUUR	CR 26 BUU	260	41.275 (1 ³ / ₈)	22.225 (⁷ / ₈)	15.875 (⁵ / ₈)	⁵ / ₈ -18	19.050 (³ / ₄)
19.050 (³ / ₄)	CR 28 BR	CR 28 B	CR 28 BUUR	CR 28 BUU	365	44.450 (1 ³ / ₈)	25.400 (1)	19.050 (³ / ₄)	¹ / ₄ -16	22.225 (⁷ / ₈)
	CR 30 BR	CR 30 B	CR 30 BUUR	CR 30 BUU	410	47.625 (1 ³ / ₈)	25.400 (1)	19.050 (³ / ₄)	¹ / ₄ -16	22.225 (⁷ / ₈)
22.225 (⁷ / ₈)	CR 32 BR	CR 32 B	CR 32 BUUR	CR 32 BUU	615	50.800 (2)	31.750 (1 ¹ / ₄)	22.225 (⁷ / ₈)	³ / ₈ -14	25.400 (1)
	CR 36 BR	CR 36 B	CR 36 BUUR	CR 36 BUU	750	57.150 (2 ¹ / ₄)	31.750 (1 ¹ / ₄)	22.225 (⁷ / ₈)	³ / ₈ -14	25.400 (1)

Remarks1. Models with a stud diameter d₁ of 6.35 mm or less have no oil hole. Other models are provided with one oil hole each on the outside surface and end surface of the stud.
2. Provided with prepacked grease.

CR...B

CR...BUUR

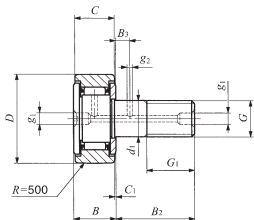
CR...BUU

Boundary dimensions mm (inch)								Mounting dimension f Min. mm (inch)	Maximum tightening torque N-m	Basic dynamic load rating C N	Basic static load rating C ₀ N
B max	B ₂	B ₃	C ₁	g ₁	g ₂	H	r				
10.2(0.40)	12.700 (¹ / ₂)	— (—)	0.794 (¹ / ₁₆)	— (—)	— (—)	3.175 (¹ / ₈)	0.397 (¹ / ₁₆)	8.334 (² / ₁₆)	1.4	2 520	2 140
10.9(0.43)	15.875 (⁵ / ₈)	— (—)	0.794 (¹ / ₁₆)	— (—)	— (—)	3.175 (¹ / ₈)	0.397 (¹ / ₁₆)	8.334 (² / ₁₆)	1.4	2 520	2 140
11.8(0.46)	15.875 (⁵ / ₈)	— (—)	0.794 (¹ / ₁₆)	— (—)	— (—)	3.175 (¹ / ₈)	0.397 (¹ / ₁₆)	11.509 (³ / ₁₆)	3.4	3 650	3 670
12.5(0.49)	19.050 (³ / ₄)	— (—)	0.794 (¹ / ₁₆)	— (—)	— (—)	3.175 (¹ / ₈)	0.397 (¹ / ₁₆)	11.509 (³ / ₁₆)	3.4	3 650	3 670
14.2(0.56)	22.225 (⁷ / ₈)	6.350 (¹ / ₄)	0.794 (¹ / ₁₆)	4.762 (³ / ₁₆)	2.381 (¹ / ₁₆)	4.762 (³ / ₁₆)	0.794 (¹ / ₁₆)	13.494 (¹ / ₁₆)	10.8	4 420	5 110
14.2(0.56)	22.225 (⁷ / ₈)	6.350 (¹ / ₄)	0.794 (¹ / ₁₆)	4.762 (³ / ₁₆)	2.381 (¹ / ₁₆)	4.762 (³ / ₁₆)	0.794 (¹ / ₁₆)	15.081 (¹ / ₁₆)	10.8	4 790	5 810
17.3(0.68)	25.400 (1)	6.350 (¹ / ₄)	0.794 (¹ / ₁₆)	4.762 (³ / ₁₆)	3.175 (¹ / ₈)	6.350 (¹ / ₄)	1.191 (¹ / ₁₆)	17.859 (³ / ₁₆)	17.4	8 810	10 800
17.3(0.68)	25.400 (1)	6.350 (¹ / ₄)	0.794 (¹ / ₁₆)	4.762 (³ / ₁₆)	3.175 (¹ / ₈)	6.350 (¹ / ₄)	1.588 (¹ / ₁₆)	19.050 (³ / ₄)	17.4	9 180	11 600
20.4(0.80)	31.750 (1 ¹ / ₂)	7.938 (³ / ₁₆)	0.794 (¹ / ₁₆)	4.762 (³ / ₁₆)	3.175 (¹ / ₈)	6.350 (¹ / ₄)	1.588 (¹ / ₁₆)	21.828 (⁵ / ₁₆)	27.7	14 200	16 000
20.4(0.80)	31.750 (1 ¹ / ₂)	7.938 (³ / ₁₆)	0.794 (¹ / ₁₆)	4.762 (³ / ₁₆)	3.175 (¹ / ₈)	6.350 (¹ / ₄)	1.588 (¹ / ₁₆)	21.828 (⁵ / ₁₆)	27.7	14 200	16 000
23.6(0.93)	38.100 (1 ¹ / ₂)	9.525 (³ / ₈)	0.794 (¹ / ₁₆)	4.762 (³ / ₁₆)	3.969 (³ / ₁₆)	7.938 (³ / ₁₆)	1.588 (¹ / ₁₆)	26.196 (1 ¹ / ₁₆)	55.7	18 600	24 300
23.6(0.93)	38.100 (1 ¹ / ₂)	9.525 (³ / ₈)	0.794 (¹ / ₁₆)	4.762 (³ / ₁₆)	3.969 (³ / ₁₆)	7.938 (³ / ₁₆)	1.588 (¹ / ₁₆)	26.196 (1 ¹ / ₁₆)	55.7	18 600	24 300
26.8(1.06)	44.450 (1 ³ / ₈)	11.112 (⁷ / ₁₆)	0.794 (¹ / ₁₆)	4.762 (³ / ₁₆)	3.969 (³ / ₁₆)	7.938 (³ / ₁₆)	1.588 (¹ / ₁₆)	32.543 (1 ³ / ₁₆)	100	25 100	38 200
26.8(1.06)	44.450 (1 ³ / ₈)	11.112 (⁷ / ₁₆)	0.794 (¹ / ₁₆)	4.762 (³ / ₁₆)	3.969 (³ / ₁₆)	7.938 (³ / ₁₆)	1.588 (¹ / ₁₆)	32.543 (1 ³ / ₁₆)	100	25 100	38 200
33.5(1.32)	50.800 (2)	12.700 (¹ / ₂)	0.794 (¹ / ₁₆)	4.762 (³ / ₁₆)	4.762 (³ / ₁₆)	11.112 (⁷ / ₁₆)	1.588 (¹ / ₁₆)	37.306 (1 ¹ / ₁₆)	162	32 500	63 900
33.5(1.32)	50.800 (2)	12.700 (¹ / ₂)	0.794 (¹ / ₁₆)	4.762 (³ / ₁₆)	4.762 (³ / ₁₆)	11.112 (⁷ / ₁₆)	1.588 (¹ / ₁₆)	37.306 (1 ¹ / ₁₆)	162	32 500	63 900

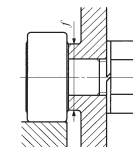
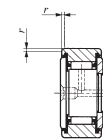
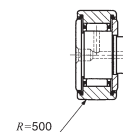
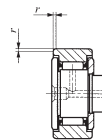
I
CF
NUCF
CFS
CR

CAM FOLLOWERS

Inch Series Cam Followers With Cage/With Screwdriver Slot



CR...R



CR

CR...UUR

CR...UU

Stud dia. 4.826 – 22.225 mm

Stud dia. mm (inch)	Identification number				Mass (Ref.) g	Boundary dimensions mm (inch)				
	Shield type		Sealed type			D	C	d ₁	G UNF	G ₁
	With crowned outer ring	With cylindrical outer ring	With crowned outer ring	With cylindrical outer ring						
4.826	CR 8 R	CR 8	CR 8 UUR	CR 8 UU	9	12.700 (1/2)	8.731 (3/8)	4.826	No.10-32	6.350 (1/4)
	CR 8-1 R	CR 8-1	CR 8-1 UUR	CR 8-1 UU	10	12.700 (1/2)	9.525 (3/8)	4.826	No.10-32	6.350 (1/4)
6.350 (1/4)	CR 10 R	CR 10	CR 10 UUR	CR 10 UU	19	15.875 (5/8)	10.319 (3/8)	6.350 (1/4)	1/4-28	7.938 (5/16)
	CR 10-1 R	CR 10-1	CR 10-1 UUR	CR 10-1 UU	21	15.875 (5/8)	11.112 (7/16)	6.350 (1/4)	1/4-28	7.938 (5/16)
9.525 (3/8)	CR 12 R	CR 12	CR 12 UUR	CR 12 UU	35	19.050 (3/4)	12.700 (1/2)	9.525 (3/8)	3/8-24	9.525 (3/8)
	CR 14 R	CR 14	CR 14 UUR	CR 14 UU	46	22.225 (7/8)	12.700 (1/2)	9.525 (3/8)	3/8-24	9.525 (3/8)
11.112 (7/16)	CR 16 R	CR 16	CR 16 UUR	CR 16 UU	73	25.400 (1)	15.875 (5/8)	11.112 (7/16)	1/2-20	12.700 (1/2)
	CR 18 R	CR 18	CR 18 UUR	CR 18 UU	88	28.575 (1 1/8)	15.875 (5/8)	11.112 (7/16)	1/2-20	12.700 (1/2)
12.700 (1/2)	CR 20 R	CR 20	CR 20 UUR	CR 20 UU	132	31.750 (1 1/4)	19.050 (3/4)	12.700 (1/2)	1/2-20	15.875 (5/8)
	CR 22 R	CR 22	CR 22 UUR	CR 22 UU	157	34.925 (1 3/8)	19.050 (3/4)	12.700 (1/2)	1/2-20	15.875 (5/8)
15.875 (5/8)	CR 24 R	CR 24	CR 24 UUR	CR 24 UU	225	38.100 (1 1/2)	22.225 (7/8)	15.875 (5/8)	5/8-18	19.050 (3/4)
	CR 26 R	CR 26	CR 26 UUR	CR 26 UU	260	41.275 (1 5/8)	22.225 (7/8)	15.875 (5/8)	5/8-18	19.050 (3/4)
19.050 (3/4)	CR 28 R	CR 28	CR 28 UUR	CR 28 UU	365	44.450 (1 3/4)	25.400 (1)	19.050 (3/4)	3/4-16	22.225 (7/8)
	CR 30 R	CR 30	CR 30 UUR	CR 30 UU	410	47.625 (1 7/8)	25.400 (1)	19.050 (3/4)	3/4-16	22.225 (7/8)
22.225 (7/8)	CR 32 R	CR 32	CR 32 UUR	CR 32 UU	615	50.800 (2)	31.750 (1 1/4)	22.225 (7/8)	7/8-14	25.400 (1)
	CR 36 R	CR 36	CR 36 UUR	CR 36 UU	750	57.150 (2 1/4)	31.750 (1 1/4)	22.225 (7/8)	7/8-14	25.400 (1)

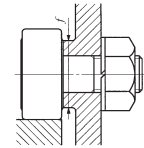
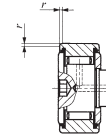
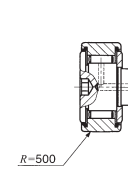
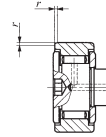
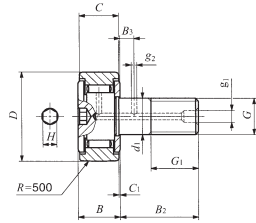
Remarks1. Models with a stud diameter d₁ of 6.35 mm or less (marked *) are provided with an oil hole on the stud head only. Other models are provided with one oil hole each on the head, outside surface and end surface of the stud.
2. Provided with prepacked grease.

Boundary dimensions mm (inch)							Mounting dimension f Min. mm (inch)	Maximum tightening torque N-m	Basic dynamic load rating C N	Basic static load rating C ₀ N
B max	B ₂	B ₃	C ₁	g ₁	g ₂	r				
10.2(0.40)	12.700(1/2)	- (-)	0.794(1/8)	*3.175(1/8)	- (-)	0.397(1/8)	8.334(1/3)	1.4	2 520	2 140
10.9(0.43)	15.875(5/8)	- (-)	0.794(1/8)	*3.175(1/8)	- (-)	0.397(1/8)	8.334(1/3)	1.4	2 520	2 140
11.8(0.46)	15.875(5/8)	- (-)	0.794(1/8)	*3.175(1/8)	- (-)	0.397(1/8)	11.509(1/2)	3.4	3 650	3 670
12.5(0.49)	19.050(3/4)	- (-)	0.794(1/8)	*3.175(1/8)	- (-)	0.397(1/8)	11.509(1/2)	3.4	3 650	3 670
14.2(0.56)	22.225(7/8)	6.350(1/4)	0.794(1/8)	4.762(3/16)	2.381(3/32)	0.794(1/8)	13.494(1/2)	10.8	4 420	5 110
14.2(0.56)	22.225(7/8)	6.350(1/4)	0.794(1/8)	4.762(3/16)	2.381(3/32)	0.794(1/8)	15.081(1/2)	10.8	4 790	5 810
17.3(0.68)	25.400(1)	6.350(1/4)	0.794(1/8)	4.762(3/16)	3.175(1/8)	1.191(1/16)	17.859(1/2)	17.4	8 810	10 800
17.3(0.68)	25.400(1)	6.350(1/4)	0.794(1/8)	4.762(3/16)	3.175(1/8)	1.588(1/16)	19.050(3/4)	17.4	9 180	11 600
20.4(0.80)	31.750(1 1/4)	7.938(5/16)	0.794(1/8)	4.762(3/16)	3.175(1/8)	1.588(1/16)	21.828(1)	27.7	14 200	16 000
20.4(0.80)	31.750(1 1/4)	7.938(5/16)	0.794(1/8)	4.762(3/16)	3.175(1/8)	1.588(1/16)	21.828(1)	27.7	14 200	16 000
23.6(0.93)	38.100(1 1/2)	9.525(3/8)	0.794(1/8)	4.762(3/16)	3.969(3/16)	1.588(1/16)	26.196(1 1/8)	55.7	18 600	24 300
23.6(0.93)	38.100(1 1/2)	9.525(3/8)	0.794(1/8)	4.762(3/16)	3.969(3/16)	1.588(1/16)	26.196(1 1/8)	55.7	18 600	24 300
26.8(1.06)	44.450(1 3/4)	11.112(7/16)	0.794(1/8)	4.762(3/16)	3.969(3/16)	1.588(1/16)	32.543(1 1/8)	100	25 100	38 200
26.8(1.06)	44.450(1 3/4)	11.112(7/16)	0.794(1/8)	4.762(3/16)	3.969(3/16)	1.588(1/16)	32.543(1 1/8)	100	25 100	38 200
33.5(1.32)	50.800(2)	12.700(1/2)	0.794(1/8)	4.762(3/16)	4.762(3/16)	1.588(1/16)	37.306(1 1/2)	162	32 500	63 900
33.5(1.32)	50.800(2)	12.700(1/2)	0.794(1/8)	4.762(3/16)	4.762(3/16)	1.588(1/16)	37.306(1 1/2)	162	32 500	63 900

I
CF
NUCF
CFS
CR

CAM FOLLOWERS

Inch Series Cam Followers Full Complement Type/With Hexagon Hole



Stud dia. 4.826 – 22.225 mm

CR...VBR

Stud dia. mm (inch)	Identification number				Mass (Ref.) g	Boundary dimensions mm(inch)				
	Shield type		Sealed type			B max	B ₂	B ₃	C ₁	g ₁
	With crowned outer ring	With cylindrical outer ring	With crowned outer ring	With cylindrical outer ring		D	C	d ₁	G UNF	
4.826 (¹ / ₄)	CR 8 VBR	CR 8 VB	CR 8 VBUUR	CR 8 VBUU	9	12.700 (¹ / ₂)	8.731 (¹¹ / ₃₂)	4.826	No.10-32	6.350 (¹ / ₄)
	CR 8-1 VBR	CR 8-1VB	CR 8-1 VBUUR	CR 8-1 VBUU	10	12.700 (¹ / ₂)	9.525 (³ / ₈)	4.826	No.10-32	6.350 (¹ / ₄)
6.350 (¹ / ₄)	CR 10 VBR	CR 10 VB	CR 10 VBUUR	CR 10 VBUU	19	15.875 (⁵ / ₈)	10.319 (¹³ / ₃₂)	6.350 (¹ / ₄)	¹ / ₄ -28	7.938 (⁵ / ₁₆)
	CR 10-1 VBR	CR 10-1VB	CR 10-1 VBUUR	CR 10-1 VBUU	21	15.875 (⁵ / ₈)	11.112 (⁷ / ₁₆)	6.350 (¹ / ₄)	¹ / ₄ -28	7.938 (⁵ / ₁₆)
9.525 (³ / ₈)	CR 12 VBR	CR 12 VB	CR 12 VBUUR	CR 12 VBUU	36	19.050 (³ / ₄)	12.700 (¹ / ₂)	9.525 (³ / ₈)	³ / ₈ -24	9.525 (³ / ₈)
	CR 14 VBR	CR 14 VB	CR 14 VBUUR	CR 14 VBUU	47	22.225 (⁷ / ₈)	12.700 (¹ / ₂)	9.525 (³ / ₈)	³ / ₈ -24	9.525 (³ / ₈)
11.112 (⁷ / ₁₆)	CR 16 VBR	CR 16 VB	CR 16 VBUUR	CR 16 VBUU	74	25.400 (1)	15.875 (⁵ / ₈)	11.112 (⁷ / ₁₆)	⁷ / ₁₆ -20	12.700 (¹ / ₂)
	CR 18 VBR	CR 18 VB	CR 18 VBUUR	CR 18 VBUU	85	28.575 (1 ¹ / ₈)	15.875 (⁵ / ₈)	11.112 (⁷ / ₁₆)	⁷ / ₁₆ -20	12.700 (¹ / ₂)
12.700 (¹ / ₂)	CR 20 VBR	CR 20 VB	CR 20 VBUUR	CR 20 VBUU	137	31.750 (1 ¹ / ₄)	19.050 (³ / ₄)	12.700 (¹ / ₂)	¹ / ₂ -20	15.875 (⁵ / ₈)
	CR 22 VBR	CR 22 VB	CR 22 VBUUR	CR 22 VBUU	160	34.925 (1 ³ / ₈)	19.050 (³ / ₄)	12.700 (¹ / ₂)	¹ / ₂ -20	15.875 (⁵ / ₈)
15.875 (⁵ / ₈)	CR 24 VBR	CR 24 VB	CR 24 VBUUR	CR 24 VBUU	230	38.100 (1 ¹ / ₂)	22.225 (⁷ / ₈)	15.875 (⁵ / ₈)	⁵ / ₈ -18	19.050 (³ / ₄)
	CR 26 VBR	CR 26 VB	CR 26 VBUUR	CR 26 VBUU	265	41.275 (1 ³ / ₈)	22.225 (⁷ / ₈)	15.875 (⁵ / ₈)	⁵ / ₈ -18	19.050 (³ / ₄)
19.050 (³ / ₄)	CR 28 VBR	CR 28 VB	CR 28 VBUUR	CR 28 VBUU	372	44.450 (1 ³ / ₄)	25.400 (1)	19.050 (³ / ₄)	³ / ₄ -16	22.225 (⁷ / ₈)
	CR 30 VBR	CR 30 VB	CR 30 VBUUR	CR 30 VBUU	418	47.625 (1 ³ / ₈)	25.400 (1)	19.050 (³ / ₄)	³ / ₄ -16	22.225 (⁷ / ₈)
22.225 (⁷ / ₈)	CR 32 VBR	CR 32 VB	CR 32 VBUUR	CR 32 VBUU	627	50.800 (2)	31.750 (1 ¹ / ₄)	22.225 (⁷ / ₈)	⁷ / ₈ -14	25.400 (1)
	CR 36 VBR	CR 36 VB	CR 36 VBUUR	CR 36 VBUU	759	57.150 (2 ¹ / ₈)	31.750 (1 ¹ / ₄)	22.225 (⁷ / ₈)	⁷ / ₈ -14	25.400 (1)

Remarks1. Models with a stud diameter d₁ of 6.35 mm or less have no oil hole. Other models are provided with one oil hole each on the outside surface and end surface of the stud.
2. Provided with prepacked grease.

CR...VB

CR...VBUUR

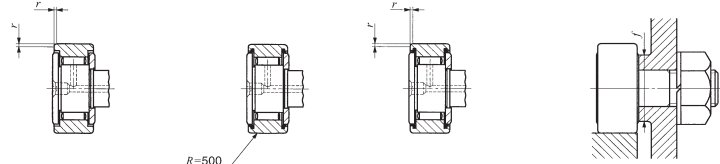
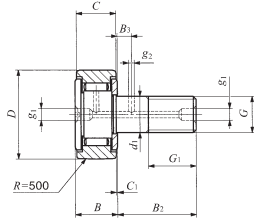
CR...VBUU

Boundary dimensions mm(inch)								Mounting dimension f Min. mm(inch)	Maximum tightening torque N-m	Basic dynamic load rating C N	Basic static load rating C ₀ N
B max	B ₂	B ₃	C ₁	g ₁	g ₂	H	r				
10.2(0.40)	12.700 (¹ / ₂)	— (—)	0.794 (¹ / ₁₆)	— (—)	— (—)	3.175 (¹ / ₈)	0.397 (¹ / ₁₆)	8.334 (² / ₁₆)	1.4	4 260	4 750
10.9(0.43)	15.875 (⁵ / ₈)	— (—)	0.794 (¹ / ₁₆)	— (—)	— (—)	3.175 (¹ / ₈)	0.397 (¹ / ₁₆)	8.334 (² / ₁₆)	1.4	4 710	5 410
11.8(0.46)	15.875 (⁵ / ₈)	— (—)	0.794 (¹ / ₁₆)	— (—)	— (—)	3.175 (¹ / ₈)	0.397 (¹ / ₁₆)	11.509 (³ / ₁₆)	3.4	5 830	7 660
12.5(0.49)	19.050 (³ / ₄)	— (—)	0.794 (¹ / ₁₆)	— (—)	— (—)	3.175 (¹ / ₈)	0.397 (¹ / ₁₆)	11.509 (³ / ₁₆)	3.4	6 340	8 530
14.2(0.56)	22.225 (⁷ / ₈)	6.350 (¹ / ₄)	0.794 (¹ / ₁₆)	4.762 (³ / ₁₆)	2.381 (³ / ₃₂)	4.762 (³ / ₁₆)	0.794 (¹ / ₁₆)	13.494 (¹ / ₁₆)	10.8	8 710	12 300
14.2(0.56)	22.225 (⁷ / ₈)	6.350 (¹ / ₄)	0.794 (¹ / ₁₆)	4.762 (³ / ₁₆)	2.381 (³ / ₃₂)	4.762 (³ / ₁₆)	0.794 (¹ / ₁₆)	15.081 (¹ / ₁₆)	10.8	8 710	12 300
17.3(0.68)	25.400 (1)	6.350 (¹ / ₄)	0.794 (¹ / ₁₆)	4.762 (³ / ₁₆)	3.175 (¹ / ₈)	6.350 (¹ / ₄)	1.191 (¹ / ₁₆)	17.859 (⁵ / ₁₆)	17.4	13 100	22 700
17.3(0.68)	25.400 (1)	6.350 (¹ / ₄)	0.794 (¹ / ₁₆)	4.762 (³ / ₁₆)	3.175 (¹ / ₈)	6.350 (¹ / ₄)	1.588 (¹ / ₁₆)	19.050 (³ / ₄)	17.4	13 100	22 700
20.4(0.80)	31.750 (1 ¹ / ₄)	7.938 (³ / ₁₆)	0.794 (¹ / ₁₆)	4.762 (³ / ₁₆)	3.175 (¹ / ₈)	6.350 (¹ / ₄)	1.588 (¹ / ₁₆)	21.828 (⁵ / ₁₆)	27.7	23 600	31 700
20.4(0.80)	31.750 (1 ¹ / ₄)	7.938 (³ / ₁₆)	0.794 (¹ / ₁₆)	4.762 (³ / ₁₆)	3.175 (¹ / ₈)	6.350 (¹ / ₄)	1.588 (¹ / ₁₆)	21.828 (⁵ / ₁₆)	27.7	23 600	31 700
23.6(0.93)	38.100 (1 ¹ / ₂)	9.525 (³ / ₈)	0.794 (¹ / ₁₆)	4.762 (³ / ₁₆)	3.969 (³ / ₁₆)	7.938 (³ / ₁₆)	1.588 (¹ / ₁₆)	26.196 (1 ¹ / ₁₆)	55.7	28 200	40 100
23.6(0.93)	38.100 (1 ¹ / ₂)	9.525 (³ / ₈)	0.794 (¹ / ₁₆)	4.762 (³ / ₁₆)	3.969 (³ / ₁₆)	7.938 (³ / ₁₆)	1.588 (¹ / ₁₆)	26.196 (1 ¹ / ₁₆)	55.7	28 200	40 100
26.8(1.06)	44.450 (1 ³ / ₄)	11.112 (⁷ / ₁₆)	0.794 (¹ / ₁₆)	4.762 (³ / ₁₆)	3.969 (³ / ₁₆)	7.938 (³ / ₁₆)	1.588 (¹ / ₁₆)	32.543 (1 ¹ / ₁₆)	100	35 300	55 600
26.8(1.06)	44.450 (1 ³ / ₄)	11.112 (⁷ / ₁₆)	0.794 (¹ / ₁₆)	4.762 (³ / ₁₆)	3.969 (³ / ₁₆)	7.938 (³ / ₁₆)	1.588 (¹ / ₁₆)	32.543 (1 ¹ / ₁₆)	100	35 300	55 600
33.5(1.32)	50.800 (2)	12.700 (¹ / ₂)	0.794 (¹ / ₁₆)	4.762 (³ / ₁₆)	4.762 (³ / ₁₆)	11.112 (⁷ / ₁₆)	1.588 (¹ / ₁₆)	37.306 (1 ¹ / ₁₆)	162	45 700	80 600
33.5(1.32)	50.800 (2)	12.700 (¹ / ₂)	0.794 (¹ / ₁₆)	4.762 (³ / ₁₆)	4.762 (³ / ₁₆)	11.112 (⁷ / ₁₆)	1.588 (¹ / ₁₆)	37.306 (1 ¹ / ₁₆)	162	45 700	80 600

I
CF
NUCF
CFS
CR

CAM FOLLOWERS

Inch Series Cam Followers Full Complement Type/With Screwdriver Slot



Stud dia. 4.826 – 31.750mm

CR...VR

CR...V

CR...VUUR

CR...VUU

Stud dia. mm (inch)	Identification number				Mass (Ref.) g	Boundary dimensions mm (inch)				
	Shield type		Sealed type			<i>B</i> _{max}	<i>B</i> ₂	<i>B</i> ₃	<i>C</i> ₁	<i>g</i> ₁
	With crowned outer ring	With cylindrical outer ring	With crowned outer ring	With cylindrical outer ring		<i>D</i>	<i>C</i>	<i>d</i> ₁	<i>G</i> UNF	
4.826 (¹ / ₄)	CR 8 VR	CR 8 V	CR 8 VUUR	CR 8 VUU	9	12.700 (¹ / ₂)	8.731 (¹¹ / ₃₂)	4.826	No.10-32	6.350 (¹ / ₄)
	CR 8-1 VR	CR 8-1 V	CR 8-1 VUUR	CR 8-1 VUU	10	12.700 (¹ / ₂)	9.525 (³ / ₈)	4.826	No.10-32	6.350 (¹ / ₄)
6.350 (¹ / ₄)	CR 10 VR	CR 10 V	CR 10 VUUR	CR 10 VUU	19	15.875 (⁵ / ₈)	10.319 (¹³ / ₃₂)	6.350 (¹ / ₄)	¹ / ₄ - 28	7.938 (⁵ / ₁₆)
	CR 10-1 VR	CR 10-1 V	CR 10-1 VUUR	CR 10-1 VUU	21	15.875 (⁵ / ₈)	11.112 (⁷ / ₁₆)	6.350 (¹ / ₄)	¹ / ₄ - 28	7.938 (⁵ / ₁₆)
9.525 (³ / ₈)	CR 12 VR	CR 12 V	CR 12 VUUR	CR 12 VUU	36	19.050 (³ / ₄)	12.700 (¹ / ₂)	9.525 (³ / ₈)	³ / ₈ - 24	9.525 (³ / ₈)
	CR 14 VR	CR 14 V	CR 14 VUUR	CR 14 VUU	47	22.225 (⁷ / ₈)	12.700 (¹ / ₂)	9.525 (³ / ₈)	³ / ₈ - 24	9.525 (³ / ₈)
11.112 (⁷ / ₁₆)	CR 16 VR	CR 16 V	CR 16 VUUR	CR 16 VUU	74	25.400 (1)	15.875 (⁵ / ₈)	11.112 (⁷ / ₁₆)	⁷ / ₁₆ - 20	12.700 (¹ / ₂)
	CR 18 VR	CR 18 V	CR 18 VUUR	CR 18 VUU	85	28.575 (1 ¹ / ₈)	15.875 (⁵ / ₈)	11.112 (⁷ / ₁₆)	⁷ / ₁₆ - 20	12.700 (¹ / ₂)
12.700 (¹ / ₂)	CR 20 VR	CR 20 V	CR 20 VUUR	CR 20 VUU	137	31.750 (1 ¹ / ₄)	19.050 (³ / ₄)	12.700 (¹ / ₂)	¹ / ₂ - 20	15.875 (⁵ / ₈)
	CR 22 VR	CR 22 V	CR 22 VUUR	CR 22 VUU	160	34.925 (1 ³ / ₈)	19.050 (³ / ₄)	12.700 (¹ / ₂)	¹ / ₂ - 20	15.875 (⁵ / ₈)
15.875 (⁵ / ₈)	CR 24 VR	CR 24 V	CR 24 VUUR	CR 24 VUU	230	38.100 (1 ¹ / ₂)	22.225 (⁷ / ₈)	15.875 (⁵ / ₈)	⁵ / ₈ - 18	19.050 (³ / ₄)
	CR 26 VR	CR 26 V	CR 26 VUUR	CR 26 VUU	265	41.275 (1 ⁵ / ₈)	22.225 (⁷ / ₈)	15.875 (⁵ / ₈)	⁵ / ₈ - 18	19.050 (³ / ₄)
19.050 (³ / ₄)	CR 28 VR	CR 28 V	CR 28 VUUR	CR 28 VUU	372	44.450 (1 ³ / ₄)	25.400 (1)	19.050 (³ / ₄)	³ / ₄ - 16	22.225 (⁷ / ₈)
	CR 30 VR	CR 30 V	CR 30 VUUR	CR 30 VUU	418	47.625 (1 ⁷ / ₈)	25.400 (1)	19.050 (³ / ₄)	³ / ₄ - 16	22.225 (⁷ / ₈)
22.225 (⁷ / ₈)	CR 32 VR	CR 32 V	CR 32 VUUR	CR 32 VUU	627	50.800 (2)	31.750 (1 ¹ / ₄)	22.225 (⁷ / ₈)	⁷ / ₈ - 14	25.400 (1)
	CR 36 VR	CR 36 V	CR 36 VUUR	CR 36 VUU	759	57.150 (2 ¹ / ₄)	31.750 (1 ¹ / ₄)	22.225 (⁷ / ₈)	⁷ / ₈ - 14	25.400 (1)
31.750 (1 ¹ / ₄)	—	—	—	CR 48 VUU	1960	76.200 (3)	44.450 (1 ³ / ₄)	31.750 (1 ¹ / ₄)	1 ¹ / ₄ - 12	31.750 (1 ¹ / ₄)

Remarks 1. Models with a stud diameter *d*₁ of 6.35 mm or less (marked *) are provided with an oil hole on the stud head only. Other models are provided with one oil hole each on the head, outside surface and end surface of the stud.
2. Provided with prepacked grease.

Boundary dimensions mm (inch)							Mounting dimension <i>f</i> Min. mm (inch)	Maximum tightening torque N-m	Basic dynamic load rating <i>C</i> N	Basic static load rating <i>C</i> ₀ N
<i>B</i> <i>B</i> _{max}	<i>B</i> ₂	<i>B</i> ₃	<i>C</i> ₁	<i>g</i> ₁	<i>g</i> ₂	<i>r</i>				
10.2 (0.40)	12.700 (¹ / ₂)	— (-)	0.794 (¹ / ₂)	*3.175 (¹ / ₈)	— (-)	0.397 (¹ / ₈)	8.334 (⁵ / ₁₆)	1.4	4 260	4 750
10.9 (0.43)	15.875 (⁵ / ₈)	— (-)	0.794 (¹ / ₂)	*3.175 (¹ / ₈)	— (-)	0.397 (¹ / ₈)	8.334 (⁵ / ₁₆)	1.4	4 710	5 410
11.8 (0.46)	15.875 (⁵ / ₈)	— (-)	0.794 (¹ / ₂)	*3.175 (¹ / ₈)	— (-)	0.397 (¹ / ₈)	11.509 (⁹ / ₁₆)	3.4	5 830	7 660
12.5 (0.49)	19.050 (³ / ₄)	— (-)	0.794 (¹ / ₂)	*3.175 (¹ / ₈)	— (-)	0.397 (¹ / ₈)	11.509 (⁹ / ₁₆)	3.4	6 340	8 530
14.2 (0.56)	22.225 (⁷ / ₈)	6.350 (¹ / ₄)	0.794 (¹ / ₂)	4.762 (³ / ₁₆)	2.381 (³ / ₁₆)	0.794 (¹ / ₂)	13.494 (⁷ / ₁₆)	10.8	8 710	12 300
14.2 (0.56)	22.225 (⁷ / ₈)	6.350 (¹ / ₄)	0.794 (¹ / ₂)	4.762 (³ / ₁₆)	2.381 (³ / ₁₆)	0.794 (¹ / ₂)	15.081 (¹ / ₂)	10.8	8 710	12 300
17.3 (0.68)	25.400 (1)	6.350 (¹ / ₄)	0.794 (¹ / ₂)	4.762 (³ / ₁₆)	3.175 (¹ / ₈)	1.191 (³ / ₁₆)	17.859 (⁵ / ₁₆)	17.4	13 100	22 700
17.3 (0.68)	25.400 (1)	6.350 (¹ / ₄)	0.794 (¹ / ₂)	4.762 (³ / ₁₆)	3.175 (¹ / ₈)	1.588 (¹ / ₈)	19.050 (³ / ₄)	17.4	13 100	22 700
20.4 (0.80)	31.750 (1 ¹ / ₄)	7.938 (³ / ₈)	0.794 (¹ / ₂)	4.762 (³ / ₁₆)	3.175 (¹ / ₈)	1.588 (¹ / ₈)	21.828 (⁷ / ₁₆)	27.7	23 600	31 700
20.4 (0.80)	31.750 (1 ¹ / ₄)	7.938 (³ / ₈)	0.794 (¹ / ₂)	4.762 (³ / ₁₆)	3.175 (¹ / ₈)	1.588 (¹ / ₈)	21.828 (⁷ / ₁₆)	27.7	23 600	31 700
23.6 (0.93)	38.100 (1 ¹ / ₂)	9.525 (³ / ₈)	0.794 (¹ / ₂)	4.762 (³ / ₁₆)	3.969 (¹ / ₈)	1.588 (¹ / ₈)	26.196 (1 ¹ / ₈)	55.7	28 200	40 100
23.6 (0.93)	38.100 (1 ¹ / ₂)	9.525 (³ / ₈)	0.794 (¹ / ₂)	4.762 (³ / ₁₆)	3.969 (¹ / ₈)	1.588 (¹ / ₈)	26.196 (1 ¹ / ₈)	55.7	28 200	40 100
26.8 (1.06)	44.450 (1 ³ / ₄)	11.112 (⁷ / ₁₆)	0.794 (¹ / ₂)	4.762 (³ / ₁₆)	3.969 (¹ / ₈)	1.588 (¹ / ₈)	32.543 (1 ¹ / ₂)	100	35 300	55 600
26.8 (1.06)	44.450 (1 ³ / ₄)	11.112 (⁷ / ₁₆)	0.794 (¹ / ₂)	4.762 (³ / ₁₆)	3.969 (¹ / ₈)	1.588 (¹ / ₈)	32.543 (1 ¹ / ₂)	100	35 300	55 600
33.5 (1.32)	50.800 (2)	12.700 (¹ / ₂)	0.794 (¹ / ₂)	4.762 (³ / ₁₆)	4.762 (³ / ₁₆)	1.588 (¹ / ₈)	37.306 (1 ¹ / ₂)	162	45 700	80 600
33.5 (1.32)	50.800 (2)	12.700 (¹ / ₂)	0.794 (¹ / ₂)	4.762 (³ / ₁₆)	4.762 (³ / ₁₆)	1.588 (¹ / ₈)	37.306 (1 ¹ / ₂)	162	45 700	80 600
46.4 (1.83)	63.500 (2 ¹ / ₂)	15.875 (⁵ / ₈)	1.588 (¹ / ₈)	6.350 (¹ / ₄)	4.762 (³ / ₁₆)	2.381 (³ / ₁₆)	51.991 (2 ¹ / ₈)	500	77 600	172 000

I
CF
NUCF
CFS
CR