

⑤ In case of Eccentric Type Cam Followers (CFE), the length of the mounting hole should be more than 0.5 mm longer than the dimension B_3 (Eccentric collar width) shown in the table of dimensions. (See Fig. 4.)

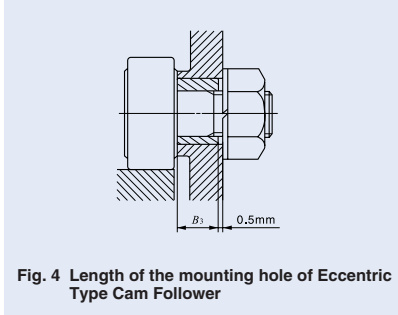


Fig. 4 Length of the mounting hole of Eccentric Type Cam Follower

⑥ For mounting Easy Mounting Type Cam Followers, it is recommended to fix the fixing screw from the upper side to the stepped portion of the stud. (See Fig. 5.)

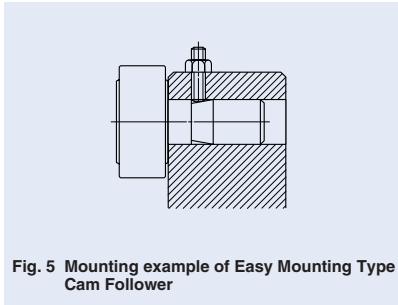


Fig. 5 Mounting example of Easy Mounting Type Cam Follower

Option Parts

C-Lube Unit for Cam Followers

C-Lube Unit CL is the lubrication-supporting equipment for the track surface and Cam Follower's outer ring to keep both surfaces free of maintenance.

Capillary system IICO has developed is a new type lubrication. It is a porous resin Lube-body or plate with steel backing formed by sintering fine resin powder and impregnating a large amount of lubrication oil

in its open pores. Capillary system always supplies proper amount of lubrication oil to the cylindrical rollers and lubrication condition of the raceway can be kept well for long period of time.

Also it prevents oil scattering causing pollution to the surrounding environment, and helps minimizing oil consumption.

Structure of C-Lube Unit for Cam Followers

C-Lube unit C-Lube

IICO C-Lube Cam Follower

Magnified photos of C-Lube

Before impregnating oil

Fusion-bonded

Resin particles are strongly fusion bonded.

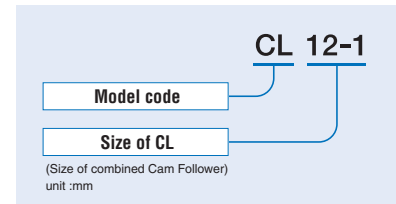
After impregnating oil

Resin part Lubricant part

Lubricant is retained in cavities amongst resin particles.

Identification number

The identification number example of IICO C-Lube Unit is shown below.



Allowable rotation speed

The rotation speed of IICO Cam Follower with C-Lube Unit should not exceeded $d_1 n = 10,000$ for reference.

$$d_1 n = d_1 \times n$$

d : Stud diameter of Cam Follower, mm
 n : Rotational speed, rpm

Minimum rotational angle

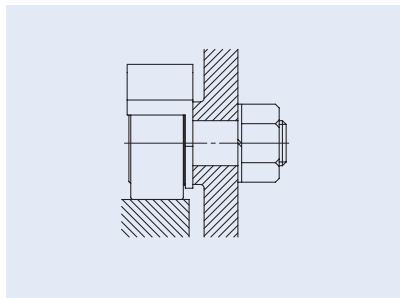
Lubricating oil is supplied to the whole external diameter surface of the outer ring. Accordingly, use the product in a condition in which the outer ring makes one or more turns.

Operating temperature

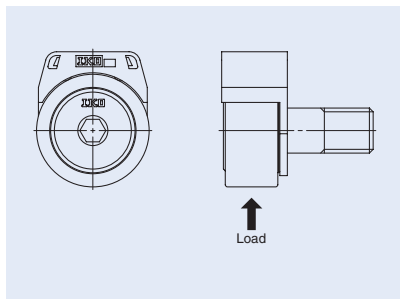
Allowable operating temperature range of IICO Cam Follower with C-Lube Unit is -15 to 80°C.

Mounting

- Set the C-Lube Unit perpendicularly to the center axis of Cam Follower and fix together with Cam Follower by tightening nut.



- Position of C-Lube Unit is adjustable. C-Lube Unit must be positioned avoiding loading direction.



- When tightening the nut, the tightening torque should not be exceeded the value maximum tightening torque on dimension table. In case loosening of the nut is predicted due to vibration, using lock nut, spring washer and other special washer are recommended.

For use

- The maximum allowable load on I I K O Cam Follower with C-Lube Unit is, in some cases, limited by the bending strength and shear strength of the C-Lube Unit instead of the load rating of needle bearing part. In order to safety operation, the maximum allowable static load is specified by the limitations of those strengths.
- After assembling C-Lube Unit and Cam Followers in the machine, please confirm that C-Lube unit provides oil correctly to the track surface before actual operation.
- Do not use in the environment which contamination of liquid and/or harmful foreign matter are expected.
- Do not wash with organic solvent and/or white kerosene, which have the ability of removing fat nor leave them in contact with the above agents.
- To ensure normal rotation of the Cam Follower, apply a load of 1% or over of the dynamic load rating at use.
- Replace with new C-Lube Unit when inside oil finishes completely. Re-lubrication is not possible.
- Do not apply a load onto the C-Lube Unit directly.

Table 19 Dimensions of C-Lube Unit for Cam Followers

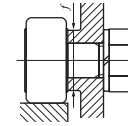
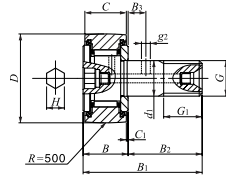
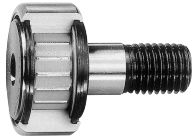
Model number	Boundary Dimensions mm				Applicable Cam Followers			
	W	H	T	t ₁	Model number ⁽¹⁾	Boundary Dimensions mm		Maximum ⁽²⁾ allowable static load N
						D	B Max	
CL 6	15.4	12.6	14	1.5	CF 6 B	16	12.2	1 560
CL 8	18.4	14.2	14	1.5	CF 8 B	19	12.2	3 700
CL 10	21	17	15.5	2	CF 10 B	22	13.2	5 510
CL 10-1	21	19.2	15.5	2	CF 10-1 B	26	13.2	5 510
CL 12	29	21	17.5	2	CF 12 B	30	15.2	7 830
CL 12-1	29	22	17.5	2	CF 12-1 B	32	15.2	7 830

Note⁽¹⁾ Only representative types shown in the table, but also applicable to the same size of standard type, with thrust washer type, centralized lubrication type, C-Lube maintenance free type and heavy duty type. Combine with C-Lube Cam Follower is strongly recommended for full maintenance free. 1N ≒ 0.102kgf

⁽²⁾ Actual load should be not exceeded these values.

CAM FOLLOWERS

Capilube Cam Followers **With Cage / With Hexagon Hole**



Stud dia. 6–12mm

CF...WBUUR/SG

Stud dia. mm	Identification number	Mass (Ref.) g	Boundary dimensions mm						
			D	C	d ₁	G	G ₁	B _{max}	B _{1max}
6	CF 6 WBUUR/SG	18.5	16	11	6	M 6×1	8	12.2	28.2
8	CF 8 WBUUR/SG	28.5	19	11	8	M 8×1.25	10	12.2	32.2
10	CF 10 WBUUR/SG	45	22	12	10	M10×1.25	12	13.2	36.2
	CF 10-1 WBUUR/SG	60	26	12	10	M10×1.25	12	13.2	36.2
12	CF 12 WBUUR/SG	95	30	14	12	M12×1.5	13	15.2	40.2
	CF 12-1 WBUUR/SG	105	32	14	12	M12×1.5	13	15.2	40.2

Remark Models with a stud diameter d_1 of 10 mm or less has no oil hole. The others are provided with one oil hole each on the outside surface and end surface of the stud.

B ₂	B ₃	C ₁	g ₂	H	Mounting dimension f Min. mm	Maximum tightening torque N·m	Basic dynamic load rating C N	Basic static load rating C ₀ N	Maximum allowable load N
16	—	0.6	—	3	11	2.7	3 660	3 650	1 950
20	—	0.6	—	4	13	6.5	4 250	4 740	4 620
23	—	0.6	—	4	16	13.8	5 430	6 890	6 890
23	—	0.6	—	4	16	13.8	5 430	6 890	6 890
25	6	0.6	3	6	21	21.9	7 910	9 790	9 790
25	6	0.6	3	6	21	21.9	7 910	9 790	9 790

I
CF
NUCF
CFS
CR