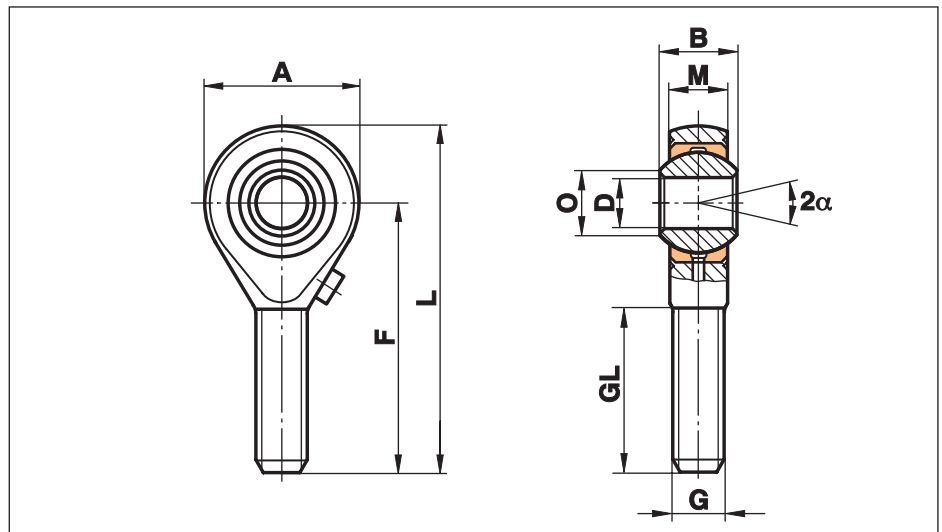


Rod Ends Series K - Heavy Duty

Series GAS

Rod Ends with male thread made from free-cutting or heat-treated steel, zinc plated and fitted with a grease nipple

Especially suited for high speed applications



| Size (D) | B | M | A | F | L | O | G | GL | Static load C ₀ kN | Dynamic load C kN | Limiting speed rev/min | Weight g |
|-----------------|------|-------|-----|-----|-------|------|----------|-----|-------------------------------|-------------------|------------------------|----------|
| 2 ¹⁾ | 4,5 | 3,60 | 9 | 20 | 24,5 | 2,6 | M 2 | 12 | 0,6 | 1,1 | | 3 |
| 3 ¹⁾ | 6,0 | 4,50 | 14 | 26 | 33,0 | 5,1 | M 3 | 15 | 1,5 | 1,8 | | 6 |
| 5 ¹⁾ | 8,0 | 6,00 | 18 | 33 | 42,0 | 7,7 | M 5 | 20 | 4,3 | 3,3 | | 13 |
| 6 | 9,0 | 6,75 | 20 | 36 | 46,0 | 8,9 | M 6 | 22 | 6,0 | 4,3 | 1500 | 20 |
| 8 | 12,0 | 9,00 | 24 | 42 | 54,0 | 10,4 | M 8 | 25 | 11,0 | 7,1 | 1200 | 33 |
| 10 | 14,0 | 10,50 | 28 | 48 | 62,0 | 12,9 | M 10 | 29 | 17,4 | 10,0 | 1000 | 56 |
| 12 | 16,0 | 12,00 | 32 | 54 | 70,0 | 15,4 | M 12 | 33 | 23,5 | 13,5 | 860 | 87 |
| 14 | 19,0 | 13,50 | 36 | 60 | 78,0 | 16,8 | M 14 | 38 | 21,0 | 17,0 | 750 | 129 |
| 16 | 21,0 | 15,00 | 42 | 66 | 87,0 | 19,3 | M 16 | 40 | 32,0 | 21,5 | 660 | 189 |
| 18 | 23,0 | 16,50 | 46 | 72 | 95,0 | 21,8 | M 18x1,5 | 44 | 38,5 | 26,0 | 600 | 267 |
| 20 | 25,0 | 18,00 | 50 | 78 | 103,0 | 24,3 | M 20x1,5 | 47 | 44,0 | 31,5 | 540 | 348 |
| 22 | 28,0 | 20,00 | 54 | 84 | 111,0 | 25,8 | M 22x1,5 | 51 | 53,0 | 38,0 | 500 | 443 |
| 25 | 31,0 | 22,00 | 60 | 94 | 124,0 | 29,6 | M 24x2 | 58 | 62,0 | 47,0 | 440 | 600 |
| 30 | 37,0 | 25,00 | 70 | 110 | 145,0 | 34,8 | M 30x2 | 71 | 82,0 | 64,0 | 370 | 1030 |
| 35 | 43,0 | 28,00 | 80 | 125 | 165,0 | 37,7 | M 36x2 | 73 | 101,0 | 80,0 | 330 | 1600 |
| 40 | 49,0 | 35,00 | 90 | 142 | 187,0 | 44,2 | M 42x2 | 78 | 124,0 | 116,0 | 290 | 2550 |
| 50 | 60,0 | 45,00 | 116 | 185 | 243,0 | 55,9 | M 48x2 | 105 | 308,0 | 185,0 | 230 | 4800 |

Materials:

Housing: up to size 12 turned from free-cutting steel to 9SMnPb28K, 12L13
from size 14 forged from heat-treated steel to C22, M1023
size 50 turned from heat-treated steel to C45, Aisi 1045

Insert: Special high strength bronze to CuSn8

Ball: Bearing steel to 100Cr6, Aisi 52100, hardened, ground, polished

This series is also available sealed (see page 38) or with threaded bolt (see page 39).

¹⁾ without lubrication fitting