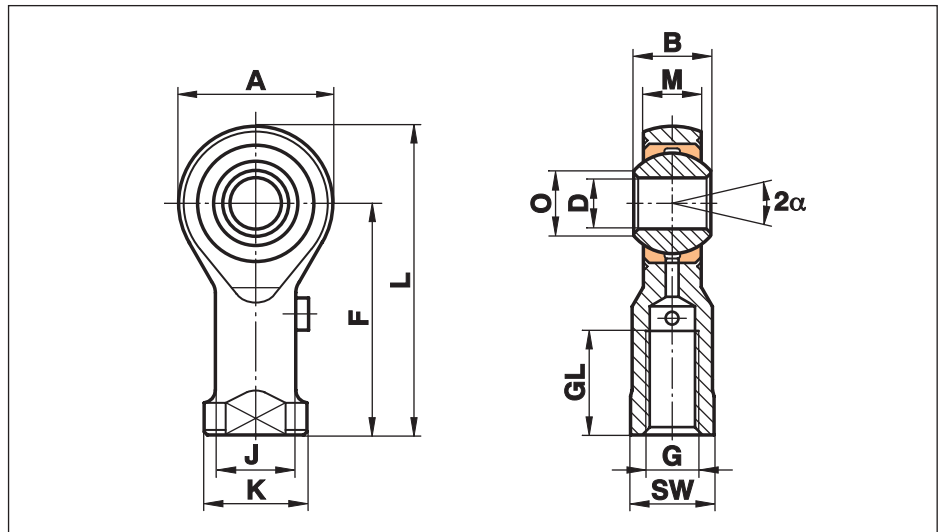


# Rod Ends Series K - Heavy Duty

## Series GIS

Rod Ends with female thread made from free-cutting or heat-treated steel, zinc plated and fitted with a grease nipple

Especially suited for high speed applications



| Size (D)        | B    | M     | A   | F   | L     | K    | J    | O    | SW   | G        | GL | Static load C <sub>0</sub> kN | Dynamic load C kN | Limiting speed rev/min | Weight g |
|-----------------|------|-------|-----|-----|-------|------|------|------|------|----------|----|-------------------------------|-------------------|------------------------|----------|
| 2 <sup>1)</sup> | 4,5  | 3,60  | 9   | 16  | 20,5  | 4,5  | 3,8  | 2,6  | 4,0  | M 2      | 7  | 3,0                           | 1,1               |                        | 3        |
| 3               | 6,0  | 4,50  | 14  | 21  | 27,0  | 6,5  | 5,0  | 5,1  | 5,5  | M 3      | 10 | 4,1                           | 1,8               |                        | 6        |
| 5               | 8,0  | 6,00  | 18  | 27  | 36,0  | 11,0 | 9,0  | 7,7  | 9,0  | M 5      | 10 | 8,0                           | 3,3               |                        | 18       |
| 6               | 9,0  | 6,75  | 20  | 30  | 40,0  | 13,0 | 10,0 | 8,9  | 11,0 | M 6      | 12 | 8,9                           | 4,3               | 1500                   | 27       |
| 8               | 12,0 | 9,00  | 24  | 36  | 48,0  | 16,0 | 12,5 | 10,4 | 13,0 | M 8      | 16 | 14,1                          | 7,1               | 1200                   | 46       |
| 10              | 14,0 | 10,50 | 28  | 43  | 57,0  | 19,0 | 15,0 | 12,9 | 17,0 | M 10     | 20 | 19,3                          | 10,0              | 1000                   | 76       |
| 12              | 16,0 | 12,00 | 32  | 50  | 66,0  | 22,0 | 17,5 | 15,4 | 19,0 | M 12     | 22 | 23,5                          | 13,5              | 860                    | 115      |
| 14              | 19,0 | 13,50 | 36  | 57  | 75,0  | 25,0 | 20,0 | 16,8 | 22,0 | M 14     | 25 | 21,0                          | 17,0              | 750                    | 170      |
| 16              | 21,0 | 15,00 | 42  | 64  | 85,0  | 27,0 | 22,0 | 19,3 | 22,0 | M 16     | 28 | 32,0                          | 21,5              | 660                    | 230      |
| 18              | 23,0 | 16,50 | 46  | 71  | 94,0  | 31,0 | 25,0 | 21,8 | 27,0 | M 18x1,5 | 32 | 38,5                          | 26,0              | 600                    | 320      |
| 20              | 25,0 | 18,00 | 50  | 77  | 102,0 | 34,0 | 27,5 | 24,3 | 32,0 | M 20x1,5 | 33 | 44,0                          | 31,5              | 540                    | 415      |
| 22              | 28,0 | 20,00 | 54  | 84  | 111,0 | 37,0 | 30,0 | 25,8 | 32,0 | M 22x1,5 | 37 | 53,0                          | 38,0              | 500                    | 540      |
| 25              | 31,0 | 22,00 | 60  | 94  | 124,0 | 42,0 | 33,5 | 29,6 | 36,0 | M 24x2   | 42 | 62,0                          | 47,0              | 440                    | 750      |
| 30              | 37,0 | 25,00 | 70  | 110 | 145,0 | 51,0 | 40,0 | 34,8 | 41,0 | M 30x2   | 51 | 82,0                          | 64,0              | 370                    | 1130     |
| 35              | 43,0 | 28,00 | 80  | 125 | 165,0 | 58,0 | 46,0 | 37,7 | 50,0 | M 36x2   | 56 | 101,0                         | 80,0              | 330                    | 1600     |
| 40              | 49,0 | 35,00 | 90  | 142 | 187,0 | 69,0 | 57,0 | 44,2 | 60,0 | M 42x2   | 60 | 124,0                         | 116,0             | 290                    | 2770     |
| 50              | 60,0 | 45,00 | 116 | 160 | 218,0 | 78,0 | 65,0 | 55,9 | 65,0 | M 48x2   | 65 | 308,0                         | 185,0             | 230                    | 5000     |

## Materials:

**Housing:** up to size 12 turned from free-cutting steel to 9SMnPb28K, 12L13  
from size 14 forged from heat-treated steel to C22, M1023  
Size 50 turned from heat-treated steel to C45, Aisi 1045

**Insert:** Special high strength bronze to CuSn8

**Ball:** Bearing steel to 100Cr6, Aisi 52100, hardened, ground, polished

This series is also available sealed (see page 38) or with threaded bolt (see page 39).

Cetop connections see page 40.

<sup>1)</sup> without lubrication fitting