

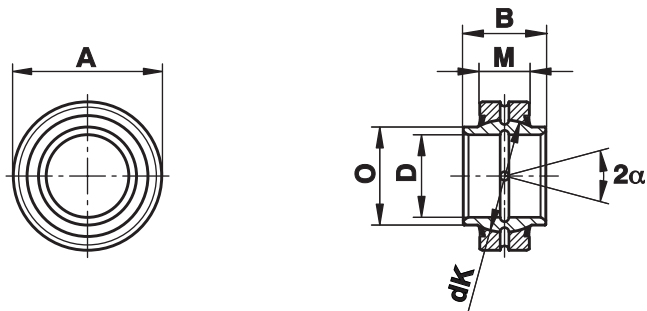
Spherical Plain Bearings - Steel on Steel

Series GE...HO-2RS

Spherical Plain Bearings
steel on steel, regreasable
with lip seal on both
sides.

Dimensions identical to
series GE...E (-2RS) but
ball with shoulder

Through the ball with
shoulder no distance
rings are required



Size (D)	B	M	A	O	dK	Static load C ₀ kN	Dynamic load C kN	Pivoting angle α	Weight g
16 ^{a)} $0_{-0,008}^0$	21	10	30 $0_{-0,009}^0$	21,0	25,0	106	21,2	3	44
17 $0_{-0,008}^0$	21	10	30 $0_{-0,009}^0$	21,0	25,0	106	21,2	3	44
20 $0_{-0,010}^0$	24	12	35 $0_{-0,011}^0$	24,0	29,0	146	30,0	6	72
25 $0_{-0,010}^0$	29	16	42 $0_{-0,011}^0$	29,0	35,5	240	48,0	4	130
30 $0_{-0,010}^0$	30	18	47 $0_{-0,011}^0$	34,2	40,7	310	62,0	4	160
35 $0_{-0,012}^0$	35	20	55 $0_{-0,013}^0$	40,0	47,0	400	80,0	4	250
40 $0_{-0,012}^0$	38	22	62 $0_{-0,013}^0$	45,0	53,0	500	100,0	4	340
45 $0_{-0,012}^0$	40	25	68 $0_{-0,013}^0$	51,5	60,0	640	127,0	4	450
50 $0_{-0,012}^0$	43	28	75 $0_{-0,013}^0$	56,5	66,0	780	156,0	4	590
60 $0_{-0,015}^0$	54	36	90 $0_{-0,015}^0$	67,7	80,0	1220	245,0	3	1060
70 $0_{-0,015}^0$	65	40	105 $0_{-0,015}^0$	78,0	92,0	1560	315,0	4	1660
80 $0_{-0,015}^0$	74	45	120 $0_{-0,015}^0$	90,0	105,0	2000	400,0	4	2470
90 ¹⁾ $0_{-0,020}^0$	80	50	130 $0_{-0,018}^0$	99,0	115,0	2440	488,0	4	2880
100 ¹⁾ $0_{-0,020}^0$	90	55	150 $0_{-0,018}^0$	113,0	130,0	3030	607,0	4	4650
120 ¹⁾ $0_{-0,020}^0$	108	70	180 $0_{-0,025}^0$	133,0	160,0	4750	950,0	4	8440

Materials:

Insert: Bearing steel to 100Cr6, Aisi 52100, hardened, ground, phosphated treated with molybdenum disulphide

Ball: Bearing steel to 100Cr6, Aisi 52100, hardened, ground, phosphated treated with molybdenum disulphide

¹⁾ Price and availability on request

²⁾ without -2RS seals