

ARHTE-E ARHTLE-E

Imperial Rod End – Heavy Duty Series
Self Lubricating

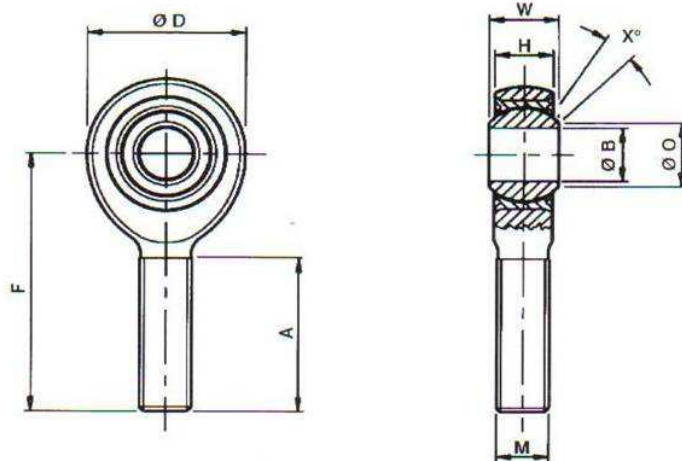
E Type High Performance Racing Series

Rod End housing
Corrosion resistant steel
AMS 5643. Rc 36 to 42

Outer race
Corrosion resistant steel
AMS 5643. H1150

Ball
Corrosion resistant steel
AMS 5630. Rc 55 to 62

Liner
Rose 'D' type enriched
In accordance
with SAE AS 81820



| Part Number | B | W | H | O | D | F | A | M | X | Max Static Radial Load | Weight |
|-------------|----------|------------|------------|---------------|------------|---------------|---------------|-------------|-------|------------------------|--------|
| | Bore Dia | Ball Width | Head Width | Ball Face Dia | Head O/dia | Centre Length | Thread Length | Thread Size | Angle | | |
| ARHTE-E | + .0000 | + .000 | + .005 | Min | + .010 | + .010 | + .031 | UNF-3A | Deg | lbf | lbs |
| ARHTLE-E | - .0005 | - .005 | - .005 | | - .010 | - .010 | - .031 | | | | |
| 4 | .2500 | .375 | .337 | .375 | .806 | 1.562 | .968 | .3125-24 | 5 | 7,446 | .072 |
| 5 | .3125 | .437 | .327 | .401 | .900 | 1.875 | 1.187 | .3750-24 | 14 | 8,934 | .095 |
| 6 | .3750 | .500 | .416 | .471 | 1.025 | 1.938 | 1.187 | .4375-20 | 9 | 10,675 | .140 |
| 7 | .4375 | .562 | .452 | .542 | 1.150 | 2.125 | 1.281 | .5000-20 | 10 | 13,677 | .210 |
| 8 | .5000 | .625 | .515 | .612 | 1.337 | 2.438 | 1.468 | .6250-18 | 9 | 22,379 | .330 |
| 10 | .6250 | .750 | .577 | .752 | 1.525 | 2.625 | 1.562 | .7500-16 | 12 | 23,700 | .480 |
| 12 | .7500 | .875 | .640 | .893 | 1.775 | 2.875 | 1.687 | .8750-14 | 13 | 32,735 | .730 |

Dimensions in inches

| No Load Rotational Breakout Torque | |
|------------------------------------|------------------|
| Bore Size | lbf.in |
| 4 | 3.0 - 8.0 lb.in |
| 5 | 3.0 - 10.0 lb.in |
| 6 | 3.0 - 10.0 lb.in |
| 7 | 4.0 - 10.0 lb.in |
| 8 | 4.0 - 10.0 lb.in |
| 10 | 4.0 - 10.0 lb.in |
| 12 | 4.0 - 10.0 lb.in |

