

ARTE-E
ARTLE-E
 Imperial Rod End
 Self Lubricating

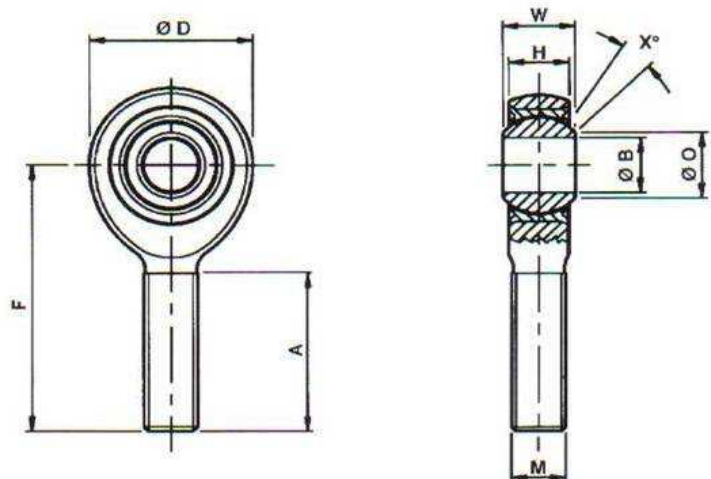
E Type
High Performance
Racing Series

Rod End housing
 Corrosion resistant steel
 AMS 5643. Rc 36 to 42

Outer race
 Corrosion resistant steel
 AMS 5643. H1150

Ball
 Corrosion resistant steel
 AMS 5630. Rc 55 to 62

Liner
 Rose 'D' type enriched
 In accordance
 with SAE AS 81820



Part Number	B	W	H	O	D	F	A	M	X	Max Static Radial Load	Weight
	Bore Dia	Ball Width	Head Width	Ball Face Dia	Head O/dia	Centre Length	Thread Length	Thread Size	Angle		
ARTE-E	+0.000	+000	+0.005	Min	+0.010	+0.010	+0.031	UNF-3A	Deg	lbf	lbs
ARTLE-E	-0.0005	-0.005	-0.005		-0.010	-0.010	-0.031				
4	.2500	.437	.337	.300	.806	1.562	.968	.3125-24	15	7,455	.072
5	.3125	.437	.327	.401	.900	1.875	1.187	.3125-24	14	7,641	.087
6	.3750	.500	.416	.471	1.025	1.938	1.187	.3750-24	8	10,675	.136
7	.4375	.562	.452	.542	1.150	2.125	1.281	.4375-20	10	13,677	.183
8	.5000	.625	.515	.612	1.337	2.438	1.468	.5000-20	9	21,648	.278
10	.6250	.75	.577	.752	1.525	2.625	1.562	.6250-18	12	23,700	.424
12	.7500	.875	.640	.893	1.775	2.875	1.687	.7500-16	13	32,735	.639

Dimensions in inches

No Load Rotational Breakout Torque	
Bore Size	lbf.in
4	3.0 - 8.0 lb.in
5	3.0 - 8.0 lb.in
6	3.0 - 8.0 lb.in
7	4.0 - 10.0 lb.in
8	4.0 - 10.0 lb.in
10	4.0 - 10.0 lb.in
12	4.0 - 10.0 lb.in

