

Technical Data

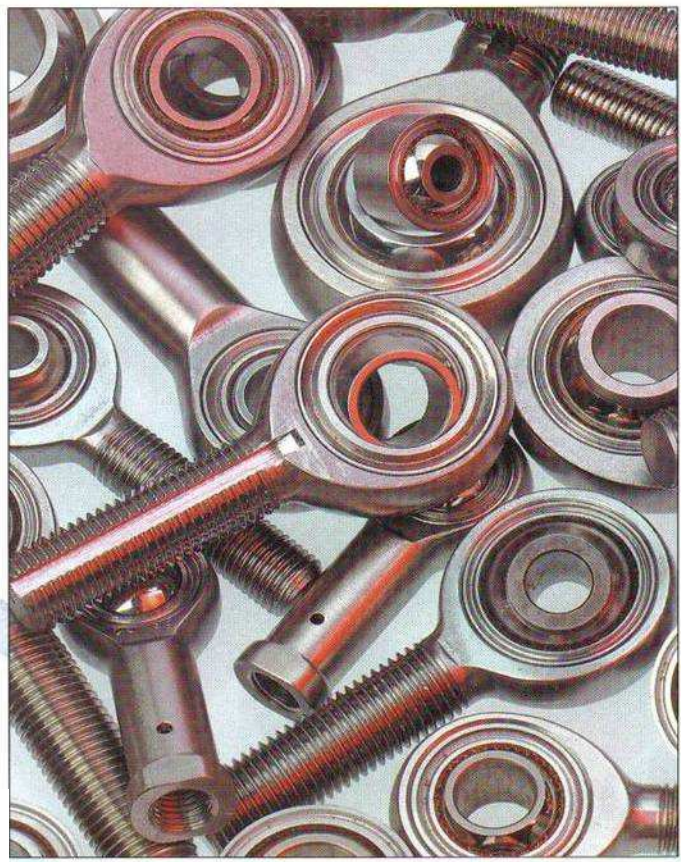
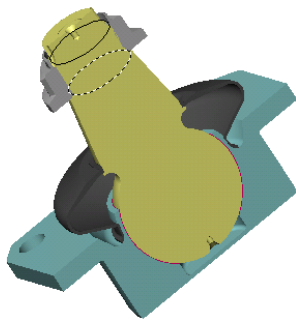
Special Designs and Capability

This catalogue shows the standard range of Bearings produced by

NMB Minebea UK Ltd As specialists in the design and manufacture of Spherical Bearings and Rod Ends **NMB Minebea UK Ltd** undertake the manufacture of special bearings to suit customers' particular requirements. Over 50% of production falls into this category. Applications for these specials come from all areas of industry, Aerospace, Automobile, Racing Car, Machinery, Military and Off Road Vehicles, Railways, Marine, Power Generation and Construction amongst many others.

NMB Minebea UK Ltd has self lubricating liner systems available to meet most of the demands called for and has experience with many differing bearing materials from Carbon and Alloy Steels through to Aluminium Alloys, Aluminium Bronzes, Nickel Alloys and Titanium.

NMB Minebea UK Ltd also offers bearings incorporating Unimesh® Type 'Q' liner which has the advantage of being non hygroscopic and is therefore particularly suited to applications where excessive fluid contamination is expected. This feature in particular has led to great success in Independent Suspension systems.



For further details or for assistance with any Special applications please contact NMB Minebea UK Ltd.

General note: NMB Minebea UK Ltd operate a policy of continual improvement and therefore Reserve the right to revise specifications without notice.

Note : Unimesh® and Rosejoint® are registered trademarks of NMB Minebea UK Ltd.



Minebea