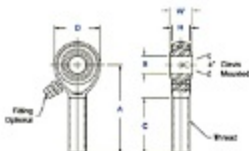


## Item # AB-6Z, AM & AB Series Male Rod Ends, High Strength Alloy - Precision (Ptfе Liners Available)

- Body - Alloy Steel, heat treated, protective coated for corrosion resistance.
- Race - Alloy steel, heat treated, protective coated for corrosion resistance (Low carbon steel with PTFE liners).
- Ball - Alloy steel, heat treated, hard chrome plated.
- Units in this series will be magnafluxed on special request only. Specify by adding suffix "M". Ex.: AM-8M.
- Units are supplied without grease fittings. When a grease fitting is required, specify by adding suffix "Z" or "F". Ex.: AM-6Z = Zerk Type Fitting AM-6F = Flush Type Fitting.
- Load ratings apply only to rod ends without grease fittings. For load ratings with fittings, please consult our engineering department.
- Studded configuration available upon request. Specify by adding suffix "S". Ex.: AM-8S.
- Ptfе Liners available upon request. Specify by adding suffix "T". Ex.: AM-8T.



[larger image](#)



[larger image](#)

### Specifications

Thread Type	Left Hand
Thread Configuration	Male
B - Ball Bore	.3750 in
W - Ball Width	.500 in
H - Head Width	.406 in
A - Base to Center	1.938 in
D - Head Diameter	1.000 in
Ball Diameter	.719 in
C - Thread Length	1.250 in
Thread Size	3/8-24
Thread Class	UNF-3A-LH
α - Misalignment Angle Clevs Mounted	12 °
Ultimate Radial Static Load Capacity	Consult Engineering Department
Approximate Brg. Weight	.112 lb
Options	Stud
Type of Lubrication	Zerk Fitting