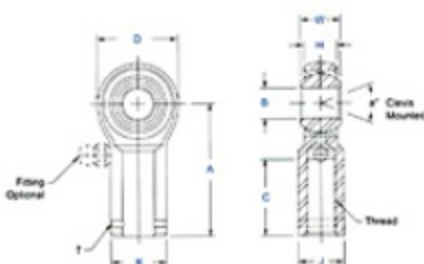


## Item # AG-7, AW & AG Series Female Rod Ends, High Strength Alloy - Precision (Ptfе Liners Available)

- Body - Alloy Steel, heat treated, protective coated for corrosion resistance.
- Race - Alloy steel, heat treated, protective coated for corrosion resistance (Low carbon steel with PTFE liners).
- Ball - Alloy steel, heat treated, hard chrome plated.
- Units in this series will be magnafluxed on special request only. Specify by adding suffix "M". Ex.: AW-8M.
- Units are supplied without grease fittings. When a grease fitting is required, specify by adding suffix "Z" or "F". Ex.: AW-6Z = Zerk Type Fitting AW-6F = Flush Type Fitting.
- Load ratings apply only to rod ends without grease fittings. For load ratings with fittings, please consult our engineering department.
- Studded configuration available upon request. Specify by adding suffix "S". Ex.: AW-8S.
- Ptfе Liners available upon request. Specify by adding suffix "T". Ex.: AW-8T.



[larger image](#)



[larger image](#)

### Specifications

Thread Type	Left Hand
Thread Configuration	Female
B - Ball Bore	.4375 in
W - Ball Width	.562 in
H - Head Width	.437 in
A - Base to Center	1.812 in
D - Head Diameter	1.125 in
K - Shank Diameter	.750 in
J - Wrench Flat Width	.625 in
Ball Diameter	.812 in
C - Thread Length	1.062 in
Thread Size	7/16-20
Thread Class	UNF-3B-LH
a - Misalignment Angle Clevis Mounted	14 °
Ultimate Radial Static Load Capacity	10,285 lbs
Approximate Brg. Weight	.198 lb
Options	Stud
Type of Lubrication	None