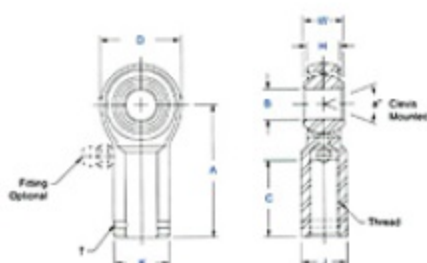


Item # AG-8, AW & AG Series Female Rod Ends, High Strength Alloy - Precision (Ptfе Liners Available)

- Body - Alloy Steel, heat treated, protective coated for corrosion resistance.
- Race - Alloy steel, heat treated, protective coated for corrosion resistance (Low carbon steel with PTFE liners).
- Ball - Alloy steel, heat treated, hard chrome plated.
- Units in this series will be magnafluxed on special request only. Specify by adding suffix "M". Ex.: AW-8M.
- Units are supplied without grease fittings. When a grease fitting is required, specify by adding suffix "Z" or "F". Ex.: AW-6Z = Zerk Type Fitting AW-6F = Flush Type Fitting.
- Load ratings apply only to rod ends without grease fittings. For load ratings with fittings, please consult our engineering department.
- Studded configuration available upon request. Specify by adding suffix "S". Ex.: AW-8S.
- Ptfе Liners available upon request. Specify by adding suffix "T". Ex.: AW-8T.



[larger image](#)



[larger image](#)

Specifications

| | |
|---------------------------------------|------------|
| Thread Type | Left Hand |
| Thread Configuration | Female |
| B - Ball Bore | .5000 in |
| W - Ball Width | .625 in |
| H - Head Width | .500 in |
| A - Base to Center | 2.125 in |
| D - Head Diameter | 1.312 in |
| K - Shank Diameter | .875 in |
| J - Wrench Flat Width | .750 in |
| Ball Diameter | .937 in |
| C - Thread Length | 1.187 in |
| Thread Size | 1/2-20 |
| Thread Class | UNF-3B-LH |
| a - Misalignment Angle Clevis Mounted | 12 ° |
| Ultimate Radial Static Load Capacity | 16,238 lbs |
| Approximate Brg. Weight | .329 lb |
| Options | Stud |
| Type of Lubrication | None |