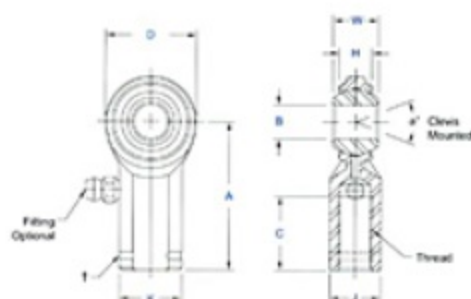


## Item # CW-6, CW & CG Series Female Rod Ends, General Purpose - Economy

- Body - Low carbon steel, protective coated for corrosion resistance.
- Ball - Alloy steel, heat treated, hard chrome plated.
- Left-hand threaded units have an identification groove near end of shank.
- Grease Fitting available for sizes -4 and up. Units are supplied without grease fittings. When a grease fitting is required, specify by adding suffix "Z" or "F". Ex.: CW-6Z = Zerk Type Fitting CW-6F = Flush Type Fitting
- Load ratings apply only to rod ends without grease fittings. For load ratings with fittings, please consult our engineering department.
- Studded configuration available upon request. Specify by adding suffix "S". Ex.: CW-8S.



[larger image](#)



[larger image](#)

[Specifications](#) · [CW & CG Note](#)

### Specifications

Thread Type	Right Hand
Thread Configuration	Female
B - Ball Bore	.3750 in
W - Ball Width	.500 in
H - Head Width	.359 in
A - Base to Center	1.625 in
D - Head Diameter	1.000 in
K - Shank Diameter	.687 in
J - Wrench Flat Width	.562 in
Ball Diameter	.719 in
C - Thread Length	.812 in
Thread Size	3/8-24
Thread Class	UNF-2B
a - Misalignment Angle Clevis Mounted	22 °
Ultimate Radial Static Load Capacity	5,087 lbs
Approximate Brg. Weight	.13 lb
Options	Stud
Type of Lubrication	None

### CW & CG Note

For dimensional tolerances of listed features, see the PDF version of the catalog under the "View Product Catalogs" tab from the home page.