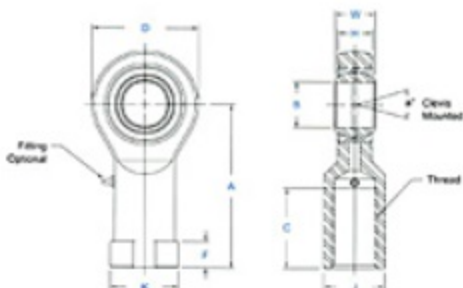


**Item # KG-20-1, KW & KG, AW & AG Large Bore Series
Female Rod Ends, General Purpose & High Strength -
Precision - Wear Resistant**

- Body (K-Series) - Alloy steel, protective coated for corrosion resistance.
- Body (A-Series) - Alloy steel, heat treated, protective coated for corrosion resistance.
- Race - 52100 steel, heat treated, protective coated for corrosion resistance.
- Ball - 52100 steel, heat treated, protective coated for corrosion resistance.
- Units are supplied without grease fittings. When a grease fitting is required, specify by adding suffix "Z" or "F". Ex.: KW-24Z-1 = Zerk Type Fitting KW-24F-1 = Flush Type Fitting.
- Load ratings apply only to rod ends without grease fittings. For load ratings with fittings, please consult our engineering department.
- Ptfе Liners available upon request. Specify by adding suffix "T". Ex.: KW-24T-1.



[larger image](#)



[larger image](#)

Specifications

Thread Type	Left Hand
Thread Configuration	Female
B - Ball Bore	1.2500 in
W - Ball Width	1.093 in
H - Head Width	.937 in
A - Base to Center	4.125 in
D - Head Diameter	2.750 in
K - Shank Diameter	1.625 in
J - Wrench Flat Width	1.500 in
F - Wrench Flat Width	.500 in
Ball Diameter	1.795 in
C - Thread Length	2.125 in
Thread Size	1 1/4-12
Thread Class	UNF-2B-LH
a - Misalignment Angle Clevis Mounted	7 °
Ultimate Radial Static Load Capacity	44,500 lbs.
Approximate Brg. Weight	2.125 lb
Type of Lubrication	None