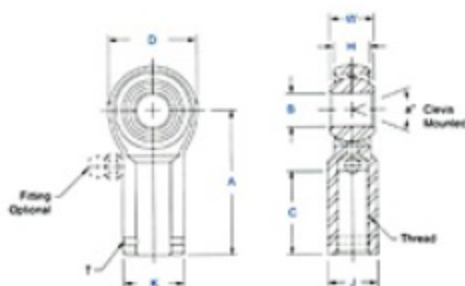


Item # MW-3Z, MW & MG Series Female Rod Ends, General Purpose - Precision

- Body - Low carbon steel, protective coated for corrosion resistance. No. 16 standard series body is alloy steel not heat treated.
- Race - Low carbon steel, protective coated for corrosion resistance.
- Ball - Alloy steel, heat treated, hard chrome plated.
- Left-hand threaded units have an identification groove near end of shank.
- Grease Fitting available for sizes -3 and up. Units are supplied without grease fittings. When a grease fitting is required, specify by adding suffix "Z" or "F". Ex.: MW-6Z = Zerk Type Fitting MW-6F = Flush Type Fitting.
- Load ratings apply only to rod ends without grease fittings. For load ratings with fittings, please consult our engineering department.
- Studded configuration available upon request. Specify by adding suffix "S". Ex.: MW-8S.
- Ptfе Liners available upon request. Specify by adding suffix "T". Ex.: MW-8T.



[larger image](#)



[larger image](#)

Specifications

Thread Type	Right Hand
Thread Configuration	Female
B - Ball Bore	.1900 in
W - Ball Width	.312 in
H - Head Width	.250 in
A - Base to Center	1.062 in
D - Head Diameter	.625 in
K - Shank Diameter	.406 in
J - Wrench Flat Width	.312 in
Ball Diameter	.437 in
C - Thread Length	.562 in
Thread Size	10-32
Thread Class	UNF-2B
a - Misalignment Angle Clevis Mounted	13 °
Ultimate Radial Static Load Capacity	Consult Engineering Department
Approximate Brg. Weight	.038 lb
Options	Stud
Type of Lubrication	Zerk Fitting