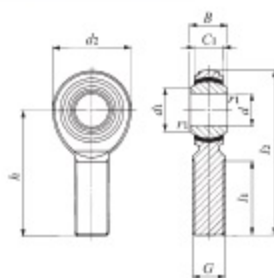


Maintenance-free Type PILLOBALL Rod Ends **With Male Thread**



POS...EC

| Identification number | Mass (Ref.) g | Boundary dimensions mm | | | | | | | | | | Ball dia. mm (inch) | Dynamic load capacity C_d N | Static load capacity C_s N |
|-----------------------|------------------|------------------------|---------------|-------|-------|-----|-------|-------|-----|-------|---------------------|------------------------------|-------------------------------------|------------------------------------|
| | | d | Thread G | d_2 | C_1 | B | d_1 | l_2 | h | l_1 | $r_{1s \min}^{(1)}$ | | | |
| POS 3EC | 5.0 | 3 | M 3×0.5 | 12 | 4.5 | 6 | 5.2 | 33 | 27 | 15 | 0.2 | 7.938 ($\frac{3}{8}$) | 3 500 | 1 220 |
| POS 4EC | 8.1 | 4 | M 4×0.7 | 14 | 5.3 | 7 | 6.5 | 37 | 30 | 17 | 0.2 | 9.525 ($\frac{3}{8}$) | 4 950 | 2 060 |
| POS 5EC | 12.5 | 5 | M 5×0.8 | 16 | 6 | 8 | 7.7 | 41 | 33 | 20 | 0.2 | 11.112 ($\frac{3}{8}$) | 6 540 | 3 340 |
| POS 6EC | 19 | 6 | M 6×1 | 18 | 6.75 | 9 | 9 | 45 | 36 | 22 | 0.2 | 12.700 ($\frac{1}{2}$) | 8 410 | 4 730 |
| POS 8EC | 32 | 8 | M 8×1.25 | 22 | 9 | 12 | 10.4 | 53 | 42 | 25 | 0.2 | 15.875 ($\frac{1}{2}$) | 14 000 | 7 760 |
| POS 10EC | 54 | 10 | M10×1.5 | 26 | 10.5 | 14 | 12.9 | 61 | 48 | 29 | 0.2 | 19.050 ($\frac{3}{4}$) | 19 600 | 10 500 |
| POS 12EC | 85 | 12 | M12×1.75 | 30 | 12 | 16 | 15.4 | 69 | 54 | 33 | 0.2 | 22.225 ($\frac{3}{4}$) | 26 200 | 13 700 |
| POS 14EC | 126 | 14 | M14×2 | 34 | 13.5 | 19 | 16.9 | 77 | 60 | 36 | 0.2 | 25.400 (1) | 33 600 | 17 200 |
| POS 16EC | 185 | 16 | M16×2 | 38 | 15 | 21 | 19.4 | 85 | 66 | 40 | 0.2 | 28.575 (1 $\frac{1}{8}$) | 42 000 | 21 100 |
| POS 18EC | 260 | 18 | M18×1.5 | 42 | 16.5 | 23 | 21.9 | 93 | 72 | 44 | 0.2 | 31.750 (1 $\frac{1}{4}$) | 51 400 | 25 100 |
| POS 20EC | 340 | 20 | M20×1.5 | 46 | 18 | 25 | 24.4 | 101 | 78 | 47 | 0.2 | 34.925 (1 $\frac{3}{8}$) | 61 600 | 30 000 |
| POS 22EC | 435 | 22 | M22×1.5 | 50 | 20 | 28 | 25.8 | 109 | 84 | 51 | 0.2 | 38.100 (1 $\frac{1}{2}$) | 74 700 | 36 400 |

Note⁽¹⁾ Minimum allowable value of chamfer dimension r_1

Remarks1. Neither oil hole nor grease nipple is provided.

2. When a metric fine thread specification is required, please contact [IKO](http://www.iko.com).