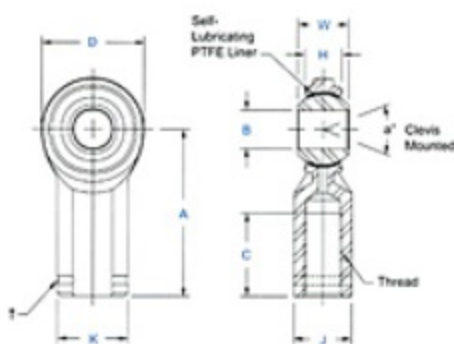


Item # VCW-7, VCW & VCG Series Female Rod Ends, General Purpose - Economy - Self-Lubricating

- Body - Low carbon steel, protective coated for corrosion resistance.
- Ball - Alloy steel, heat treated, hard chrome plated.
- Bushing - Steel backed, PTFE composite.
- Left-hand threaded units have an identification groove near end of shank.
- Studded configuration available upon request. Specify by adding suffix "S". Ex.: VCW-8S.



[larger image](#)



[larger image](#)

[Specifications](#) · [VCW & VCG Note](#)

Specifications

Thread Type	Right Hand
Thread Configuration	Female
B - Ball Bore	.4375 in
W - Ball Width	.562 in
H - Head Width	.406 in
A - Base to Center	1.812 in
D - Head Diameter	1.125 in
K - Shank Diameter	.750 in
J - Wrench Flat Width	.625 in
Ball Diameter	.781 in
C - Thread Length	.937 in
Thread Size	7/16-20
Thread Class	UNF-2B
a - Misalignment Angle Clevis Mounted	17 °
Ultimate Radial Static Load Capacity	4464 lb
Approximate Brg. Weight	.18 lb
Options	Stud

VCW & VCG Note

For dimensional tolerances of listed features, see the PDF version of the catalog under the "View Product Catalogs" tab from the home page.